

# ***Grizzly*** ***Industrial, Inc.*** ®

## **VERTICAL MILLING MACHINE MODEL G1004/G1008 PARTS LIST**



COPYRIGHT © 1999 BY GRIZZLY INDUSTRIAL, INC.

**WARNING: NO PORTION OF THIS MANUAL MAY BE REPRODUCED IN ANY SHAPE  
OR FORM WITHOUT THE WRITTEN APPROVAL OF GRIZZLY INDUSTRIAL, INC.**

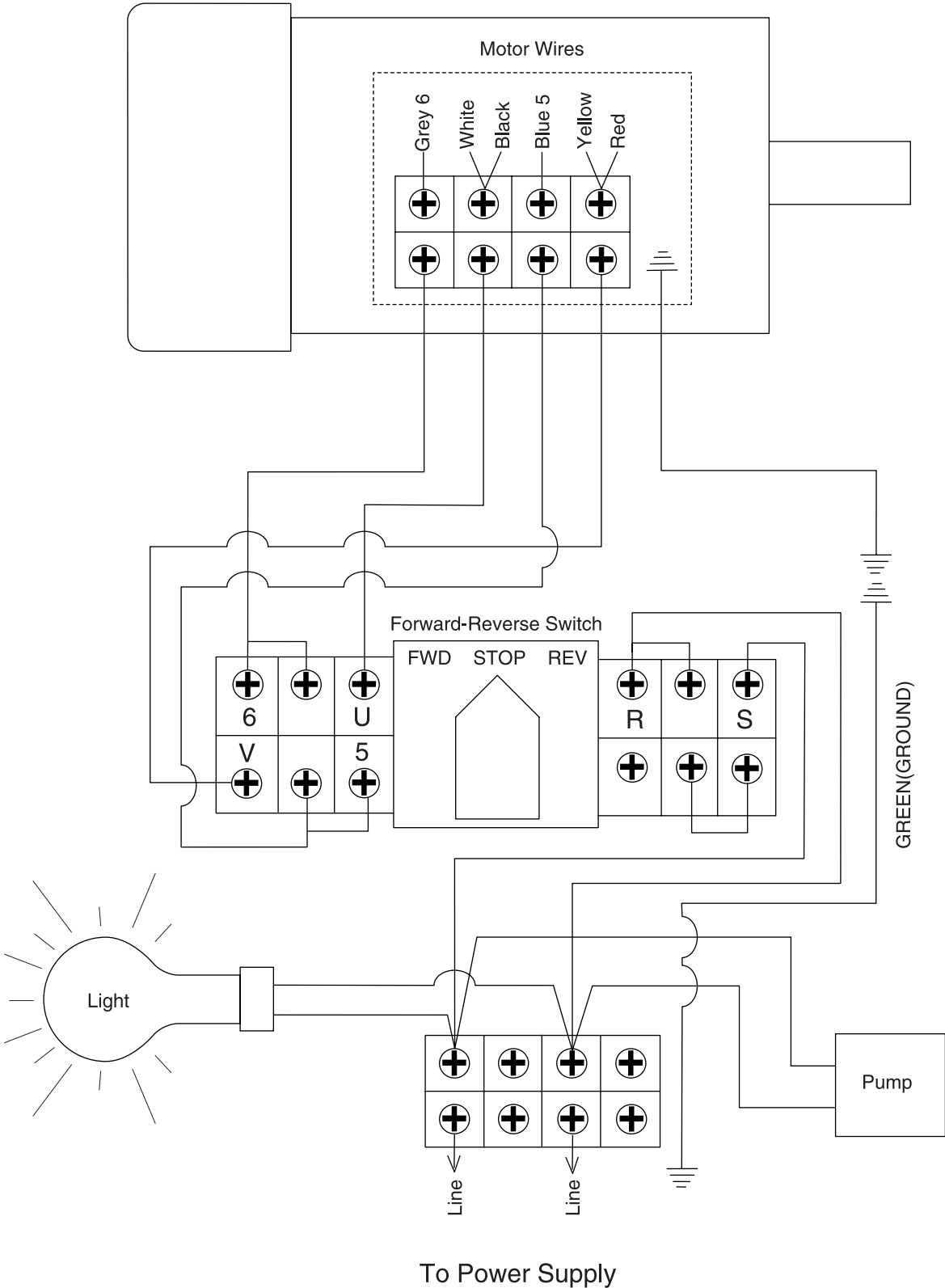
REVISED OCTOBER, 1999. PRINTED IN U.S.A.

### **PARTS LIST DISCLAIMER**

This parts list and drawings represent the configuration of the machine as it is currently being shipped. The machine configuration can change as product improvements are incorporated. If you own an earlier version of the machine, this parts list may not depict your machine exactly. Contact Customer Service if you have any questions about part differences. Previous parts list versions are not available on-line.

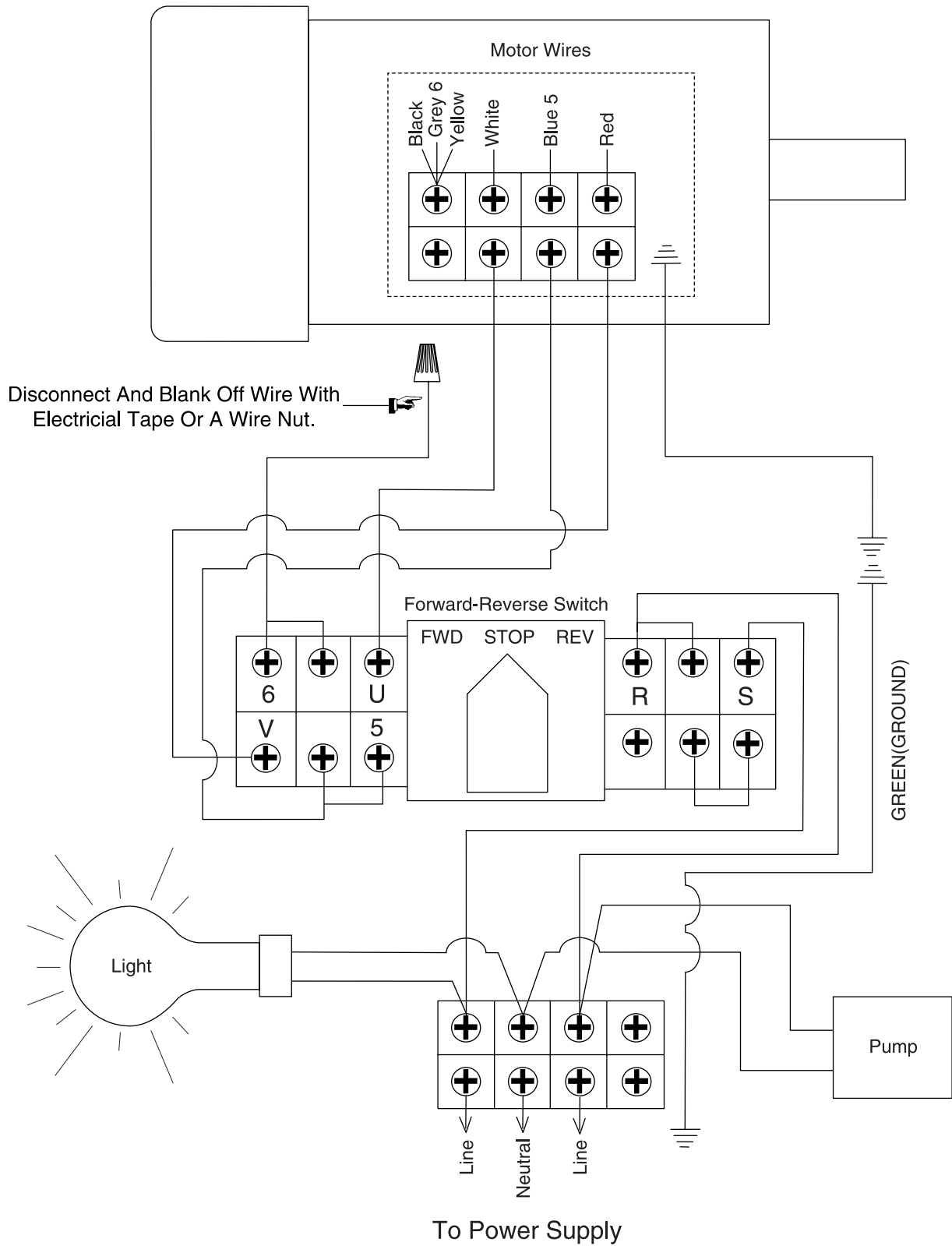
# G1004/8 110 VOLT WIRING DIAGRAM

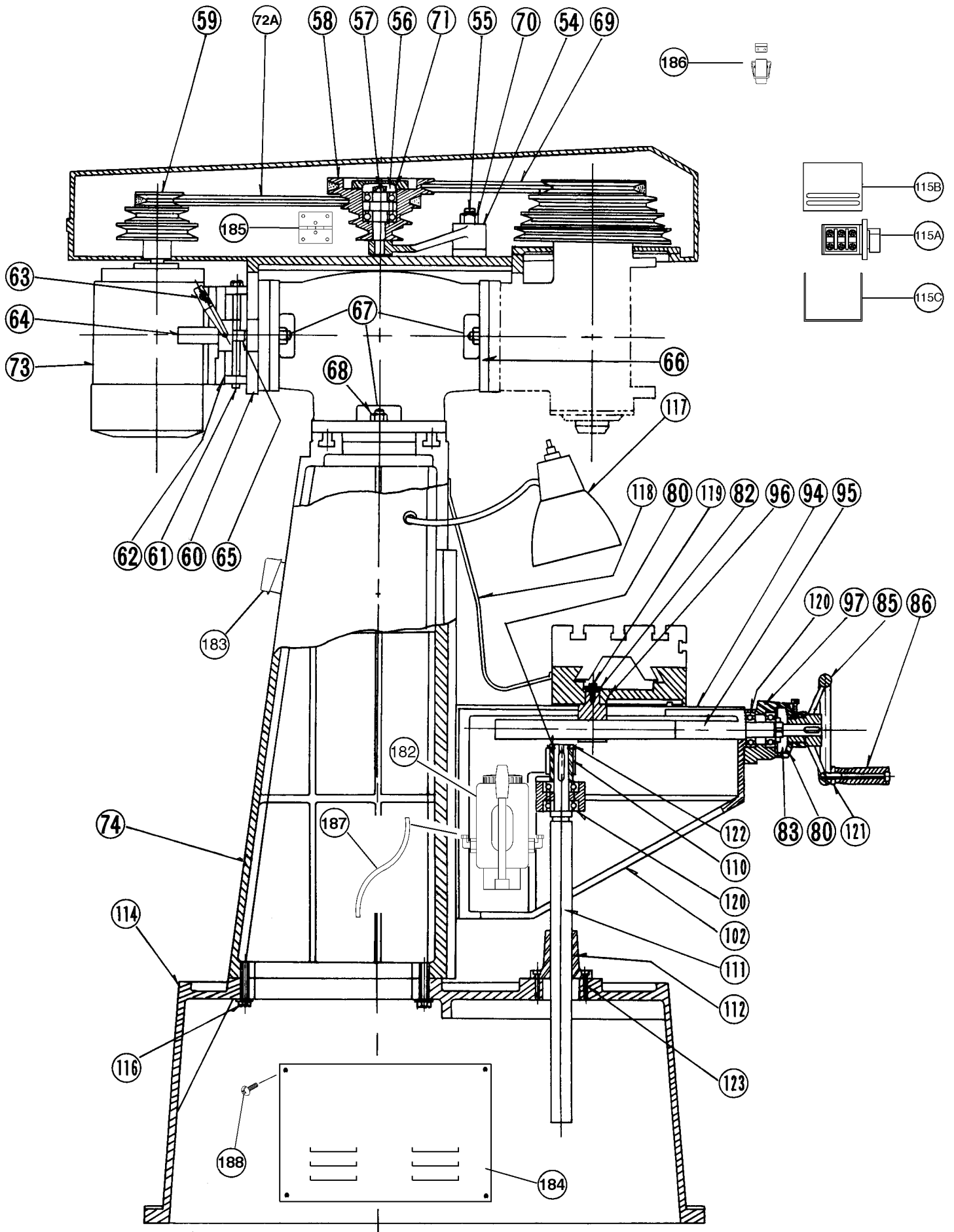
**NOTE:** If Motor Rotates Opposite Forward/Reverse Switch Setting, Swap The Positions Of Motor Wires 5 And 6.

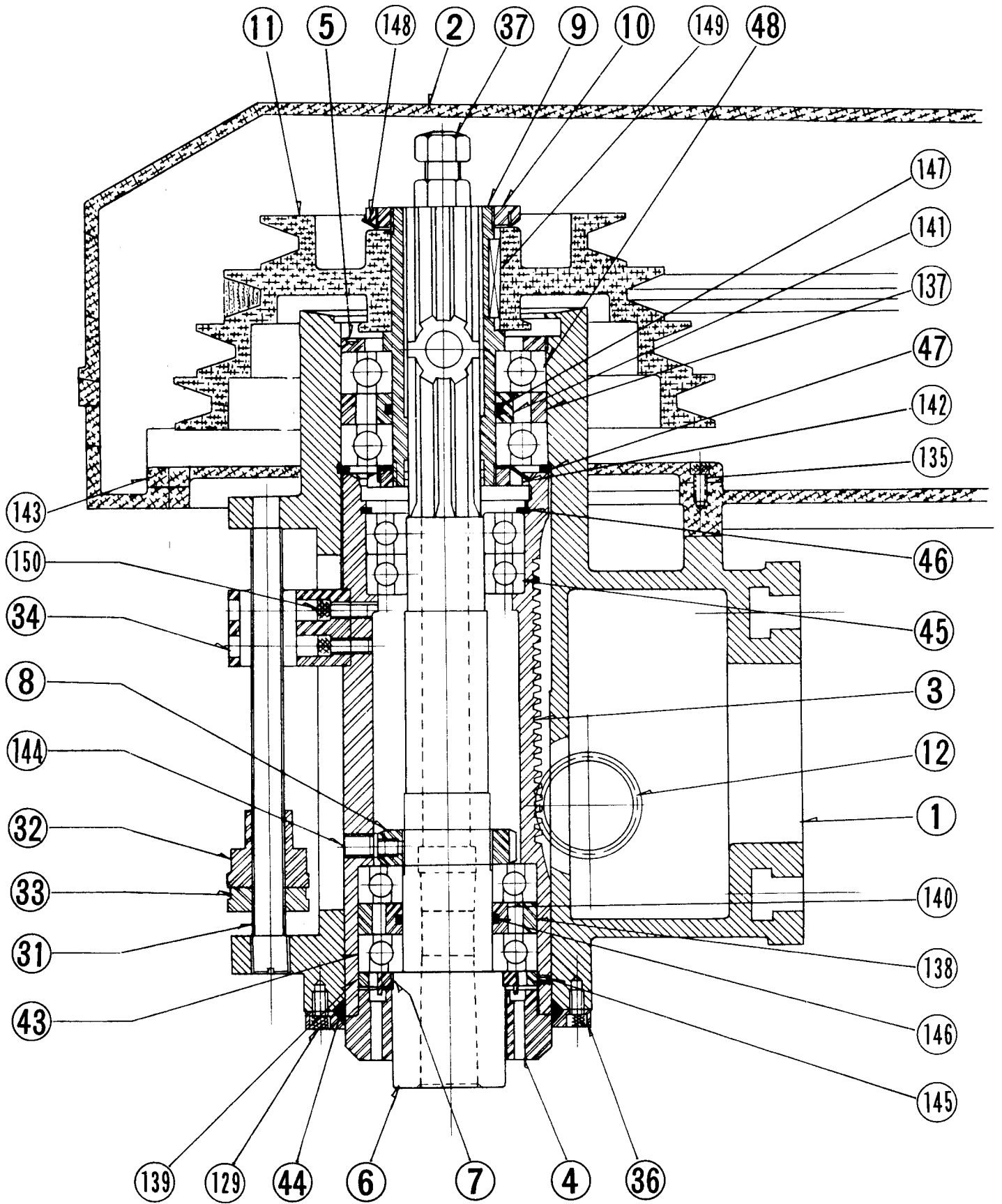


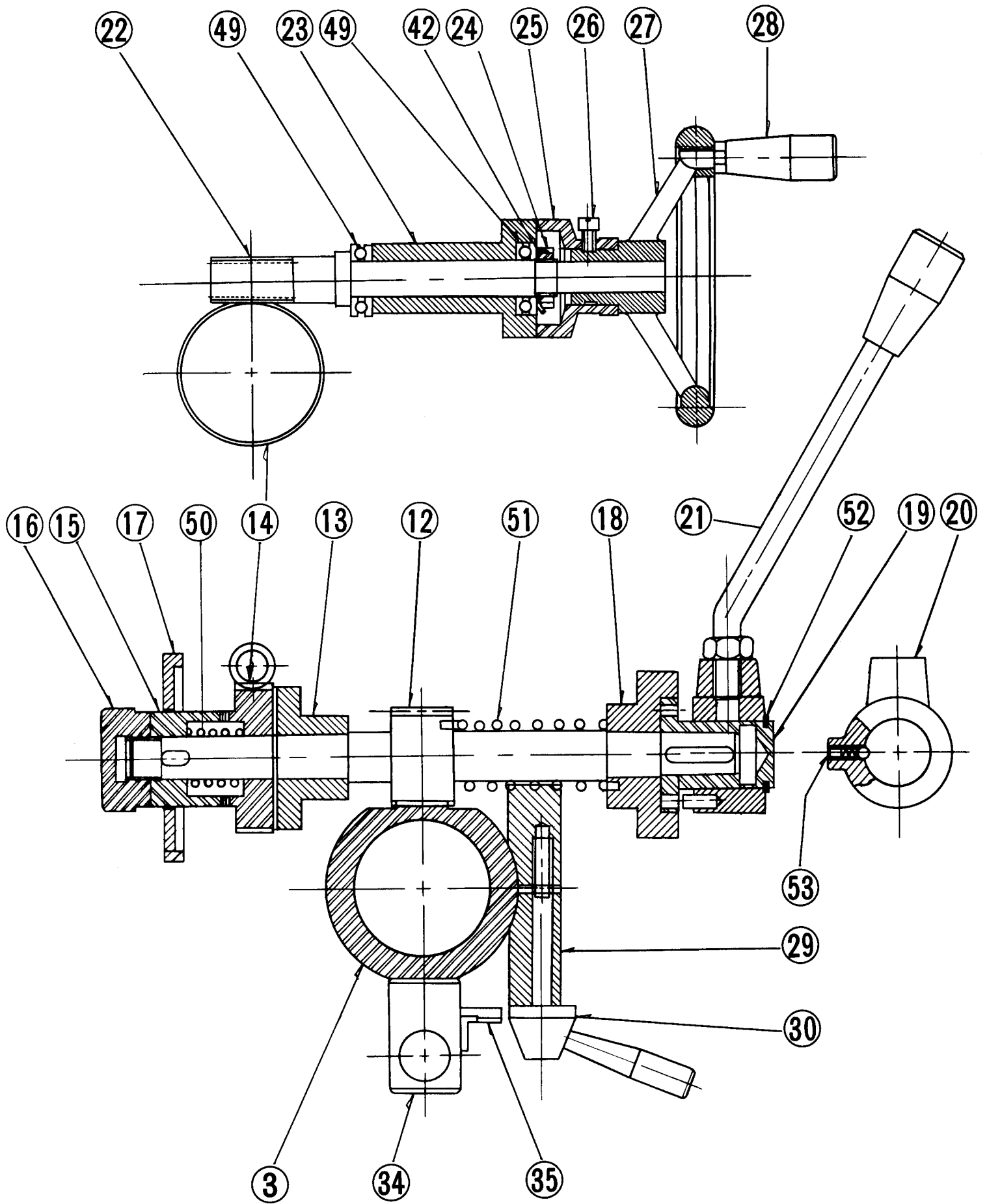
# G1004/8 220 VOLT WIRING DIAGRAM

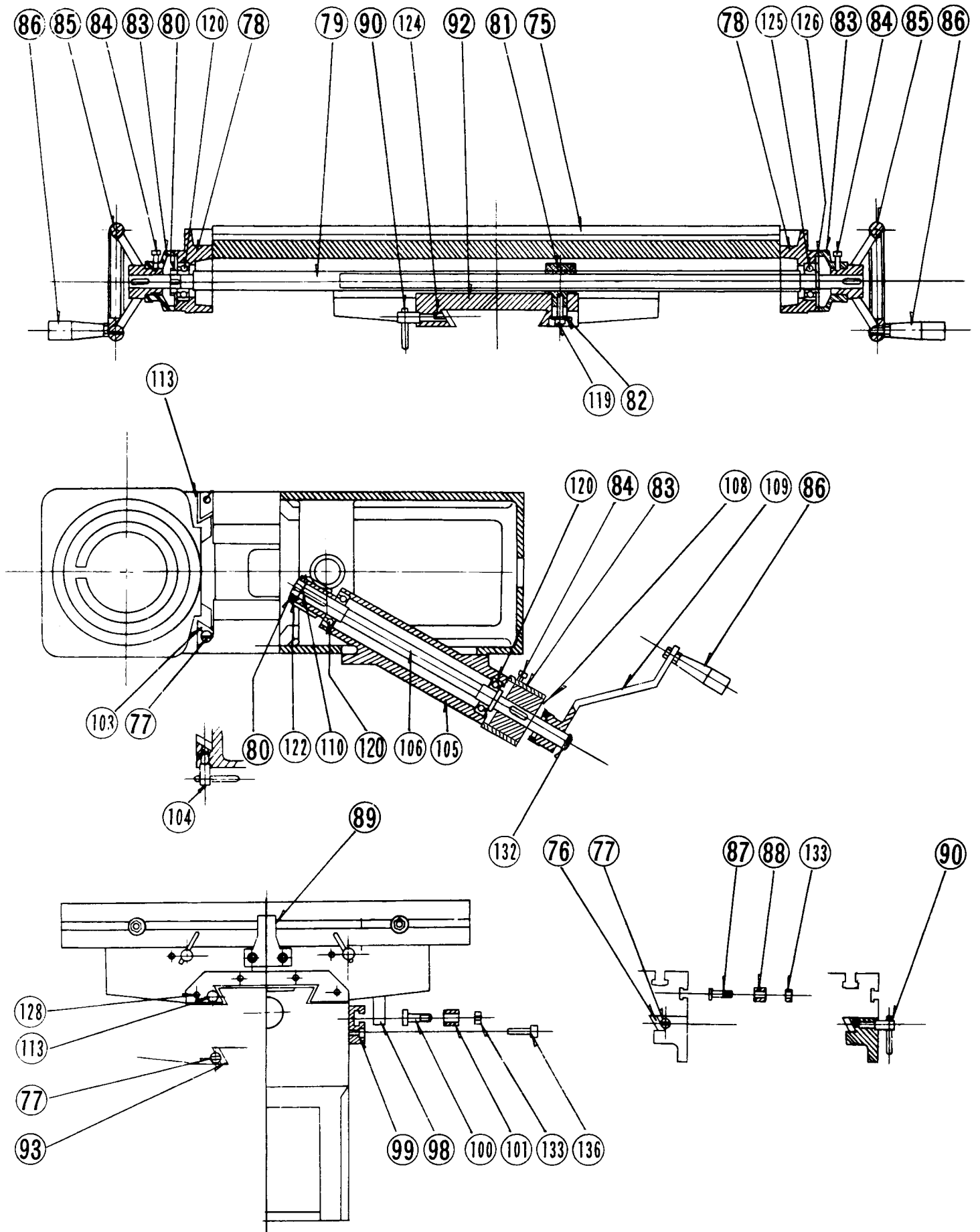
**NOTE:** If Motor Rotates Opposite Foward/Reverse Switch Setting, Swap The Positions Of Motor Wires 5 And 6.











G1004/1008 Vertical Milling Machine

REF	PART #	DESCRIPTION
a01	P1004001	MILLING HEAD
02	P1004002	BELT HOUSING COVER
03	P1004003	QUILL
04	P1004004	COVER
05	P1004005	LOCKING NUT
06	P1004006	SPINDLE
07	P1004007	SEAL
08	P1004008	NUT
09	P1004009	SPINDLE SLEEVE
10	P1004010	PULLEY LOCK NUT
11	P1004011	SPINDLE PULLEY
12	P1004012	QUILL PINION SHAFT
13	P1004013	PINION SHAFT SEAT
14	P1004014	CLUTCH WORM GEAR
15	P1004015	CLUTCH
16	P1004016	CLUTCH ADJ NUT
17	P1004017	CLUTCH COVER
18	P1004018	PINION SHAFT SEAT
19	P1004019	SLEEVE
20	P1004020	HANDLE SEAT
21	P1004021	HANDLE BAR
22	P1004022	WORM SHAFT
23	P1004023	SLEEVE
24	P1004024	NUT
25	P1004025	DIAL
26	P1004026	POSITION SCREW
27	P1004027	HAND WHEEL
28	P1004028	HANDLE
29	P1004029	QUILL LOCKING BLOCK
30	P1004030	QUILL LOCKING BOLT
31	P1004031	MICRO SCREW
32	P1004032	MICRO ADJ NUT
33	P1004033	MICRO STOP NUT
34	P1004034	QUILL STOP
35	P1004035	SCALE
36	P1004036	FELT RING
37	P1004037	DRAW BAR
42	P1004042	WASHER
43	P7207	ANGULAR CONT BEARING

REF	PART #	DESCRIPTION
44	P1004044	FELT
45	P6206	BALL BEARING 6206
46	P1004046	RETAINING RING
47	PR27M	INT RETAINING RING 85mm
48	P6209	BALL BEARING 6209
49	P51102	THRUST BEARING 51102
50	P1004050	SPRING
51	P1004051	SPRING
52	PR08M	EXT RETAINING RING 19mm
53	PB18M	HEX BOLT M6-1.0 X 15mm
54	P1004054	SWIVEL ARM
55	P1004055	SWIVEL STUD
56	P1004056	PULLEY SHAFT COVER
57	P1004057	PULLEY STUD
58	P1004058	IDLER PULLEY
59	P1004059	MOTOR PULLEY
60	P1004060	PIVOT BASE
61	P1004061	PIVOT
62	P1004062	MOTOR MOUNT
63	P1004063	SET HANDLE
64	P1004064	TENSION HOUSING
65	P1004065	TENSION ROD
66	P1004066	COLUMN BRACKET
67	PB41	HEX BOLT 1/2"-12 X 1 1/2"
68	PN06	HEX NUT 1/2"-12
69	PVB39	V-BELT B-39
70	PN06	HEX NUT 1/2"-12
71	P6204	BALL BEARING 6204
72	PVB35	V-BELT B-35
73	P1004073	MOTOR
74	P1004074	COLUMN
75	P1004075	TABLE
76	P1004076	TABLE GIB
77	P1004077	ADJUSTING SCREW
78	P1004078	BRACKET
79	P1004079	X-AXIS LEAD SCREW
79	P1008079	X-AXIS LEAD SCREW
80	P1004080	NUT
81	P1004081	X-AXIS FEED NUT



REF	PART #	DESCRIPTION
82	P1004082	WASHER
83	P1004083	DIAL
84	P1004084	SCREW
85	P1004085	HAND WHEEL
86	P1004086	HANDLE
87	P1004087	ADJUSTMENT SCREW
88	P1004088	SLEEVE
89	P1004089	STOP
90	P1004090	LOCK SCREW W/ BAR
92	P1004092	SADDLE
93	P1004093	SADDLE GIB
94	P1004094	CHIP GUARD
95	P1004095	Y-AXIS LEAD SCREW
96	P1004096	Y-AXIS FEED NUT
97	P1004097	BRACKET
98	P1004098	STOP BLOCK
99	P1004099	STOP BLOCK FIXTURE
100	PB01M	HEX BOLT M10-1.5 X 30mm
101	P1004101	SLEEVE
102	P1004102	KNEE
103	P1004103	KNEE GIB
104	P1004104	LOCKING SCREW
105	P1004105	SLEEVE
106	P1004106	GEAR SHAFT
108	P1004108	CLUTCH
109	P1004109	HANDLE ARM
110	P1004110	ELEVATION GEAR
111	P1004111	LEAD SCREW
112	P1004112	ELEV NUT
113	P1004113	CHIP GUARD
114	P1004114	BASE
115A	PSW03	FOR/REV SWITCH
115B	P1035033	SWITCH BOX COVER
115C	P1035031	SWITCH MOUNT
116	PB42	HEX BOLT 1/2"-12 X 2"
117	P1004117	LIGHT
118	P1004118	RUBBER SHEET
119	PB08M	HEX BOLT M6-1.0 X 20mm
120	P6004	BEARING 6004
121	PN08	HEX NUT 3/8"-16

REF	PART #	DESCRIPTION
122	P1004122	WASHER
123	PSB32M	CAP SCREW M6-1.0 X 17mm
124	P1004124	BLOCK
125	P6004	BEARING 6004
126	PR07M	EXT RETAINING RING 18mm
128	PS09M	PHLP HD SCR M5-0.8X10mm
129	P1004129	BOLT M5-0.8 X 10mm
132	PR07M	EXT RETAINING RING 18mm
133	P1004133	SPECIAL NUT
135	P1004135	BOLT M6-1.0
136	PSB31M	CAP SCR M8-1.25 X 25mm
137	P1004137	COLLAR
138	P1004138	COLLAR
139	P1004139	NUT
140	P1004140	COLLAR
141	P1004141	COLLAR
142	P1004142	NUT
143	P1004143	COVER
144	PSS16M	SETSCREW M6-1.0 X 10mm
145	PSS08M	HEX BOLT M4-.7 X 5mm
146	P1004146	O-RING
147	P1004147	O-RING
148	P1004148	WASHER
149	PK25M	KEY 7 X 7 X 20mm
150	P1004150	BOLT M5-0.8 X 14mm
180	P1004180	TILT SCALE
182	P1004182	ONE SHOT LUBE PUMP
183	P1004183	POWER CONNECTION BOX
184	P1004184	ACCESS PANEL
185	P1004185	HINGE
186	P1004186	LATCH
187	P1004187	LUBRICATION TUBE
* 188	PS14M	PHLP HD SCR M6-1.0 x 12mm
189	P1004189	CHIP PAN
190	P1004190	CHIP PAN DOOR
191	P1004191	COOLANT PUMP
192	P1004192	COOLANT RESERVOIR
193	P1004193	PUMP SWITCH
194	P1004194	COOLANT HOSE
195	P1004195	COOLANT VALVE
241	P1008241	POWERFEEDER

\* Items listed after this number are not shown in the drawings.